

This PDF is direct from a website and has imperfect formatting. You can view the original page at [www.ibase.com](http://www.ibase.com)

## Examples - online libraries and digital asset management

Web based digital asset management systems and libraries that you can try for yourself are of course the best illustrations, and most of those below have links to publicly available URLs.

However, many of our clients, both small and large, have wholly internal systems which we can't give you a link to. There are descriptions for some of these here, others not amongst them include - Broughton Hall Business Park, Catalyst Museum, Lowry Museum, Quilters Guild, St Albans Museum, The Tate, Wedgwood Museum, Arup, Federal Mogul, Liberty of London, Mission Aviation Fellowship, Harrow School, Royal Shakespeare Company, Royal Horticultural Society, Shakespeare Birthplace Trust... and many more.

---

### Natural History New Zealand (NHNZ) - Video Online Library



<http://www.nhnzmovingimages.com>

Features:

- Searching options include subjects, advanced and refine search.
- Fuzzy searching and 'Did you mean' suggestions.
- User registration for enhanced features.
- Download clips.
- Request further details.
- Email links to images.
- Save clip bins for future use.

---

### Edinburgh City Libraries Capital Collections - Online Library



<http://www.capitalcollections.org.uk/>

Features:

- Exhibitions embracing records about the same or similar topics.
- Email links to images.
- A wide ranging and detailed keyword (tag) subject hierarchy.
- Searching options include keyword (tag) and a comprehensive A - Z index.
- Purchase of prints or digital files with online payment - ecommerce.

This PDF is direct from a website and has imperfect formatting. You can view the original page at [www.ibase.com](http://www.ibase.com)

- Linked related information about the original artist or photographer and, where appropriate, the original medium used for the work.
- Two of the exhibitions are featured on the home page, and are regularly rotated with others to maintain a dynamic web presence.

---

### Glasgow City Libraries, Sir Thomas Lipton - Online Library



<http://www.mitchelllibrary.org/lipton/>

Features:

- Email links to images.
- Life story menu structure.
- Image request by email.
- Global feedback and comments by email.

---

### City of London Guildhall Library and Art Gallery - Online Library



<http://collage.cityoflondon.gov.uk>

Features:

- Virtual exhibitions.
- Categorised collections
- Search by artists, people and places.
- Online ordering with e-commerce.
- Best sellers and highlights.

This PDF is direct from a website and has imperfect formatting. You can view the original page at [www.ibase.com](http://www.ibase.com)

### **iBase Media Services - Demonstration Online Library**



<http://picturelibrary.ibase.com>

Features:

- Email links to images.
- Collections displayed on the home page, regularly rotated.
- Image order / request by email
- Embedded HTML links to Google maps
- Download high resolution watermarked version.
- Searching options include collections, keyword (tag), and a comprehensive A - Z index.
- Global feedback and comments by email.

---

### **International Rugby Board - Digital Media Asset System**



<http://images.irb.com>

The International Rugby Board in Dublin use iBase Quartet for their internal media asset management system, enabling contributors and users around the world to upload and access material under the control of the IRB's marketing department.

The system is designed primarily for internal use, but there is guest login with strictly controlled access rights.

---

### **Lancashire County Council, Lancashire Lantern image archive - Online Library**



<http://lanternimages.lancashire.gov.uk/>

Features:

This PDF is direct from a website and has imperfect formatting. You can view the original page at [www.ibase.com](http://www.ibase.com)

- Email links to images.
- Image ordering with e-commerce and download options
- Collections for records about the same or similar topics.
- Global feedback and comments by email.
- Session rotating images on the home page.
- Subjects / tags / keywords displayed with micro-thumbs.

---

### Rhondda Cynon Taf Libraries - Online Library



<http://archive.rhondda-cynon-taf.gov.uk/treorchy/index.php>

Features:

- Dual language for English and [Welsh](#).
- Email links to images.
- Collections by geographical area.
- Collections displayed on the home page.
- Searching options include collections, keyword (tag), and a comprehensive A - Z index.

---

### Royal Armouries - Online Library



<http://collections.royalarmouries.org>

Features:

- Collections displaying related images, for example 'Armours of Henry VIII' and 'Presentation swords'.
- Some of the collections are featured on the home page, and regularly rotated with others to maintain a dynamic web presence.
- A wide ranging and detailed keyword (tag) subject hierarchy.
- Email links to images.
- Searching options include keyword (tag) and a comprehensive A - Z index.
- Advanced searches separately within objects and book records.
- Federated search is available to the V&A Museum using an iBase REST server.

### Royal Institute of British Architects RIBApix - Online Library



<http://www.ribapix.com/>

#### Features:

- Download images
  - Topics embracing records about the same or similar subjects.
  - Detailed keyword (tag) subject hierarchy.
  - Searching options include keyword (tag) and a comprehensive A - Z index.
  - Purchase of prints or digital files with online payment.
  - Topics are featured on the home page, regularly rotated to maintain a dynamic web presence.
- 

### Shetland Museum and Archives - Online Library



<http://photos.shetland-museum.org.uk/>

#### Features:

- Online payment for prints.
  - Feedback for individual items.
  - Collections for records about the same or similar topics.
  - Multiple category (subject / keyword / tag) hierarchy.
  - Searching options include keyword (tag) and a comprehensive A - Z index.
  - Automatic rotation of images on the home page.
-

This PDF is direct from a website and has imperfect formatting. You can view the original page at [www.ibase.com](http://www.ibase.com)

### University College Dublin - Digital Media Asset System



<http://ims.ucd.ie/>

University College Dublin use an iBase Asset Management system, hosted by ibase Media Services, for their annual Images of Research competition.

Entrants use an upload form configured specifically for the competition, which ensures that all of the details required by the organisers are captured. Judges are given temporary access passwords that enable them to view the images and add their judgements.

There is a guest login on the site, which allows access to each year's entries.

---

### University of St Andrews Photographic Archive - Online Library



<http://special.st-andrews.ac.uk/saspecial/>

Features:

- Email links to images.
- Exhibitions embracing records about the same or similar topics.
- Searching options include keyword (tag) and a comprehensive A - Z index.
- Item page includes micro thumbs with subject / keyword / tag assignments.
- Several of the twenty six collections are featured on the home page.
- Multiple category (subject / keyword / tag) hierarchy, including separate indexes for 'Content' and 'Location'.

---

### Virtual Mitchell, Glasgow City Libraries - Online Library



<http://www.mitchelllibrary.org/virtualmitchell/>

This PDF is direct from a website and has imperfect formatting. You can view the original page at [www.ibase.com](http://www.ibase.com)

#### Features:

- Email links to images.
- Area search / street search / subject search as icons on the home page
- Image request by email
- Searching options include collections, keyword (tag), and a comprehensive A - Z index.
- Subjects displayed with micro-thumbs.
- Global feedback and comments by email.

---

### Woods Hole Oceanographic Institute - Digital Media Asset System



<http://shiva.who.edu/ims/>

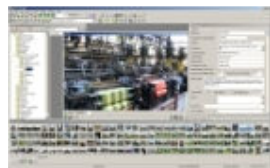
The Woods Hole Oceanographic Institute's system holds around 150,000 assets, uploaded from around the world's oceans via satellite links.

The system is designed primarily for internal use, but there is guest login with strictly controlled access rights.

---

### *Examples without publicly available URLs*

#### BBC Heritage Department - Cataloguing



The [BBC Heritage Department](#) use iBase Manager for managing digital assets, cataloguing their large collection of historical broadcasting material, which includes important documents, sound and video files, interesting and unusual props, sound and television equipment of all kinds such as microphones, cameras, recording systems, monitors etc...

There are many works of art, including paintings by Rolf Harris, a portrait of Patrick Moore by Robin Lee Hall, a bronze bust of Edward Elgar by Tom Taylor, and very much more. BBC Heritage's choice of the iBase system and media management software database schema was influenced by its unique flexibility in dealing with a wide range of disparate items, each of which requires a different emphasis from the descriptive and searchable metadata.

This is a wholly internal system, and no public login is available.

This PDF is direct from a website and has imperfect formatting. You can view the original page at [www.ibase.com](http://www.ibase.com)

---

### **AEG (Europe) The O2, The British Music Experience - Digital Media Asset System**



The [British Music Experience](#) use iBase Quartet digital asset management system to catalogue and manage their large collection of images, video and sound files, and other digital assets.

Internal and authorised external users can upload assets and edit associated metadata from anywhere that has access to the system's URL, and of course search the whole database to browse, view and download files as required - according to their permissions provided by the system manager.

This is a wholly internal system, and no public login is available.

---

### **National College for School Leadership**



The marketing department of the National College for School wanted to be able properly manage their growing stock of digital images for publicity and brand asset management, which are used in a wide variety of publications and on their [website](#).

Key requirements included - administrative control over users and access rights; powerful searching; image request and authorised download; automatic logging of image use; and - very importantly - a hosted and managed service to minimise the effort needed to add and catalogue new images. Sharron Ranby, the NCSL Marketing Co-ordinator said "....we are absolutely thrilled by the library. It's easy to use, practical and definitely what I was looking for ..."

This is a wholly internal system, and no public login is available.

---

### **Her Majesty's Courts Service - Digital Media Asset System**



Her Majesty's Courts Service use their media asset management system, hosted by iBase Media Services, for managing internal digital assets so that staff and external agencies with appropriate logins and permissions can search, view and download from a range of available resolutions.



This PDF is direct from a website and has imperfect formatting. You can view the original page at [www.ibase.com](http://www.ibase.com)

This is a wholly internal system, and no public login is available.

---

For further information about iBase products please contact us at [sales@ibase.com](mailto:sales@ibase.com) or call +44 (0) 1943 603636